

EVEREST[®]

QUALITY TOOLS

Since 1963

Engineered for Excellence



Price List # 011113/13-14

PRICE LIST

No.011113/13-14

W.E.F.1st November,2013

ALL PRODUCTS MANUFACTURED
IN-HOUSE

LIFE-TIME GUARANTEE AGAINST
MATERIAL / MANUFACTURING
DEFECTS

 **HINDUSTAN EVEREST TOOLS LIMITED**

Website : www.everesttools.com , e-mail : domestic@everesttools.com

ISO 9001 : 2008 Certified Company



Since 1963

Engineered for Excellence

A modern Company with strong tradition

The Company was incorporated in 1962 as Hindustan Dowidat Tools Limited, in collaboration with Dowidat Willi Dowidat of Federal Republic of Germany. In 1974 the Company was re-christened Hindustan Everest Tools Limited and ever since then we have been selling our products under the brand name of



Superior workmanship

At **EVEREST** we take pride in the quality of our products and that's why we guarantee our products against material/manufacturing defects for lifetime.

What makes us different?

- Most modern manufacturing technology.
- Precision and dimensional accuracy.
- Durability, Dependable & long life.
- Consistent quality standards.
- Continual development and improvement of products.
- Ergomatic design.

Nationwide network of offices/depots

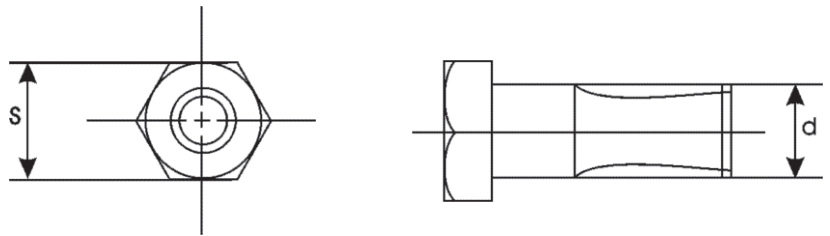
To effectively and efficiently deliver these products to you in the shortest possible time we have set up a chain of 12 fully stocked depots servicing over 500 authorised stockist across the country.

**METRIC, SAE AND WHITWORTH SIZES :
COMPARATIVE CHART**

NOMINAL WRENCH OPENINGS AND NORMAL DIAMETERS OF SAE BOLTS, SCREW AND NUTS WRENCH OPENING

Nominal size of Wrench, also Basic of maximum Width Across Flats of Bolts, Screw Heads end

SAE	MM	WW	MM
1 / 4	6.35	1 / 16	6.50
5 / 16	7.94	3 / 32	7.54
11 / 32	8.73	1 / 8	8.64
3 / 8	9.52	3 / 16	11.30
13 / 32	10.32	1 / 4	13.33
7 / 16	11.11	5 / 16	15.24
1 / 2	12.70	3 / 8	18.03
9 / 16	14.29	7 / 16	20.83
19 / 32	15.08	1 / 2	23.37
5 / 8	15.88	9 / 16	25.65
11 / 16	17.46	5 / 8	27.94
3 / 4	19.05	11 / 16	30.48
25 / 32	19.84	3 / 4	33.00
13 / 16	20.64	13 / 16	35.30
7 / 8	22.22	7 / 8	37.59
15 / 16	23.81	15 / 16	40.13
1	25.40	1	42.42
1.1 / 16	26.99	1.1 / 8	47.24
1.1 / 8	28.57	1.1 / 4	52.07
1.3 / 16	30.16	1.3 / 8	56.39
1.1 / 4	31.75	1.1 / 2	61.21
1.5 / 16	33.34	1.5 / 8	65.53
1.3 / 8	34.92	1.3 / 4	70.10
1.7 / 16	36.51		
1.1 / 2	38.10		
1.9 / 16	39.69		
1.5 / 8	41.28		
1.11 / 16	42.86		
1.3 / 4	44.45		
1.13 / 16	46.04		
1.7 / 8	47.72		
2	50.80		



SAE : SAE is the abbreviation of Society of Automotive Engineers (USA) 1/2 means 1/2" distance "s" across flats of bolts, screw heads and nuts.

MM : In case of MM, the distance "S" across flats is indicated in millimeters. 12 MM means 12 millimeters distance "S" across flats of bolts, screw heads and nuts.

WW : WW is the abbreviation for Whitworth (U.K) and it indicates diameter of the bolt or screw 'd' 1 / 8ww means diameter of the bolt as 1 / 8 inch and does not indicate distance across flats.

29 - DOUBLE OPEN END SPANNER



Forged, Chrome Vanadium Steel. Each head set at a 15° angle.

Finish : CS (Chrome Plated)

The Product is based on IS : 2028

Metric (MM)	American (SAE)	English (WW)	Price Per Pc ₹
6 x 7	1/4 x 5/16	-	23.00
8 x 9	5/16 x 11/32	-	27.00
-	5/16 x 3/8	-	27.00
10 x 11	-	1/8 x 3/16	28.00
-	3/8 x 7/16	-	33.00
12 x 13	-	-	39.00
-	7/16 x 1/2	3/16 x 1/4	39.00
14 x 15	1/2 x 9/16	1/4 x 5/16	43.00
-	9/16 x 5/8	-	57.00
16 x 17	19/32 x 11/16	5/16 x 3/8	52.00
-	5/8 x 11/16	-	52.00
-	5/8 x 3/4	5/16 x 7/16	63.00
18 x 19	-	3/8 x 7/16	69.00
20 x 22	3/4 x 7/8	-	91.00
-	25/32 x 7/8	-	91.00
-	13/16 x 7/8	7/16 x 1/2	91.00
21 x 23	7/8 x 15/16	-	98.00
22 x 24	-	7/16 x 9/16	101.00
24 x 26	15/16 x 1	1/2 x 9/16	126.00
24 x 27	-	-	126.00
25 x 28	1 x 1.1/8	9/16 x 5/8	141.00
-	1.1/16 x 1.1/8	9/16 x 11/16	147.00
-	1.1/16 x 1.1/4	-	173.00
-	-	5/8 x 3/4	173.00
30 x 32	1.1/8 x 1.1/4	11/16 x 3/4	174.00

Sets	No. of Pcs	Contents	Price Per Set ₹
4M	4	10x11, 12x13, 14x15, 16x17	154.00
6M	6	6x7, 8x9, 10x11, 12x13, 14x15, 16x17	201.00
66M	6	8x9, 10x11, 12x13, 14x15, 16x17, 18x19	245.00
7M	7	8x9, 10x11, 12x13, 14x15, 16x17, 18x19, 20x22	332.00
8M	8	6x7, 8x9, 10x11, 12x13, 14x15, 16x17, 18x19, 20x22	353.00
10M	10	6x7, 8x9, 10x11, 12x13, 14x15, 16x17, 18x19, 20x22, 21x23, 24x27	566.00
100M	10	6x7, 8x9, 10x11, 12x13, 14x15, 16x17, 18x19, 20x22, 24x27, 30x32	638.00
1010M	10	8x9, 10x11, 12x13, 14x15, 16x17, 18x19, 20x22, 21x23, 24x27, 30x32	710.00
12M	12	6x7, 8x9, 10x11, 12x13, 14x15, 16x17, 18x19, 20x22, 21x23, 24x27, 25x28, 30x32	865.00
6A	6	3/8x7/16, 1/2x9/16, 19/32x11/16, 5/8x3/4, 25/32x7/8, 15/16x1	408.00
6W	6	1/8x3/16, 3/16x1/4, 1/4x5/16, 5/16x3/8, 3/8x7/16, 7/16x1/2	322.00
66W	6	1/8x3/16, 3/16x1/4, 1/4x5/16, 5/16x7/16, 7/16x9/16, 9/16x11/16	421.00
9W	9	1/8x3/16, 3/16x1/4, 1/4x5/16, 5/16x3/8, 3/8x7/16, 7/16x1/2, 1/2x9/16, 9/16x5/8, 5/8x3/4	762.00

Note: Material can be supplied in CP finish @ 10% additional price over & above CS price, provided substantial quantities are ordered. Please check with depot incharge or Head office for quantities.

895 - DOUBLE OPEN END SPANNER



German Type Engineer's Spanner with a raised collar around the open ends and each head set at 15° angle. Forged, Chrome Vanadium Steel.

Finish : CS (Chrome Plated)

The Product is based on DIN : 895 and IS : 2028

Metric (MM)	English (WW)	Price Per Pc. ₹
7x8	-	20.00
8x10	-	26.00
8x11	-	29.00
9x10	-	29.00
10x12	-	33.00
10x13	-	33.00
12x14	-	39.00
13x14	-	39.00
13x15	-	49.00
13x16	-	49.00
13x17	-	53.00
14x17	-	59.00
17x19	-	65.00
18x21	-	82.00
17x22	-	82.00
19x22	-	88.00
27x30	-	213.00
27x32	-	218.00
30x36	-	349.00
32x36	3/4x7/8	333.00
36x41	7/8x1	468.00
-	7/8x1.1/8	468.00
41x46	1x1.1/8	545.00
46x50	1.1/8x1.1/4	889.00
50x55	-	1366.00
55x60	-	1621.00

DOUBLE OPEN END SPANNER

5 - DOUBLE OPEN END SPANNER

PROFESSIONAL SERIES



Drop Forged, Chrome Vanadium Steel. Each head set at 15° angle. Slim jaws and long oval shank.

Finish : CP (Chrome Plated Polished Heads)

FCP (Fully Polished)

The Product is based on DIN : 3110, IS : 2028

Metric (MM)	Price Per Pc. ₹ CP
6x7	34.00
8x9	36.00
10x11	43.00
12x13	55.00
14x15	61.00
16x17	80.00
18x19	96.00
20x22	116.00
21x23	129.00
24x26	166.00
25x27	185.00
30x32	238.00
30x36	269.00

(In Sets)

Sets	No. of Pcs.	Contents	Price Per Set ₹
5/6M CP	6	6x7, 8x9, 10x11,12x13,14x15, 16x17	308.00
5/8M CP	8	6x7, 8x9, 10x11, 12x13, 14x15, 16x17, 18x19, 20x22	519.00
5/12MCP	12	6x7, 8x9, 10x11, 12x13,14x15, 16x17,18x19, 20x22, 21x23, 24x26, 25x27, 30x32	1237.00
5/8 FCP	8	6x7, 8x9, 10x11,12x13,14x15, 16x17, 18x19, 20x22	554.00
5/12 FCP	12	6x7, 8x9, 10x11, 12x13,14x15, 16x17, 18x19, 20x22,21x23, 24x26, 25x27, 30x32	1603.00

* Note: Sets packed in rack and shrink wrapped

223 - COMBINATION RING & OPEN END SPANNER



Designed for easier handling. Equal openings at both ends. Bihexagon ring end offset at 15° angle and open end set at 15° angle.

Forged from Chrome Vanadium Steel.

Finish: CP (Chrome Plated Polished Heads)

The Product is based on DIN : 3113 IS : 6389

Metric (MM)	American (SAE)	Price per pc ₹
6	1/4	26.00
7	-	28.00
8	5/16	35.00
9	-	38.00
10	3/8	40.00
11	7/16	42.00
12	-	50.00
13	1/2	50.00
14	9/16	60.00
15	-	62.00
16	5/8	70.00
17	11/16	78.00
18	-	83.00
19	3/4	88.00
20	-	111.00
21	-	115.00
22	7/8	133.00
23	-	141.00
24	15/16	159.00
25	1	169.00
27	1.1/16	193.00
28	1.1/8	198.00
30	-	226.00
32	1.1/4	273.00

(In Sets)

Sets	No. of Pcs.	Contents	Price per set ₹
6M	6	8,10,12,13,14,17	309.00
8M	8	6,7,8,9,10,14,17,19	389.00
8M	8	8,9,10,11,13,14,17,19	424.00
12M*	12	6,7,8,9,10,11,12,13,14,17,19,22	665.00

* Note: Sets packed in Roll-up Pouch and then in carton.

277 - COMBINATION RING & OPEN END SPANNER-LONG PATTERN



Designed for easier operations. Equal openings at both ends. Bihexagon ring end offset at 15° angle and open end set at 15° angle Ring GRIP-RITE Pattern. Forged from Chrome Vanadium Steel.

The Product is based on DIN : 3113

Finish: CP (Chrome Plated Polished Heads)

Metric MM	Price Per Pc. ₹
6	41.00
7	44.00
8	46.00
9	47.00
10	50.00
11	60.00
12	62.00
13	65.00
14	67.00
15	81.00
16	88.00
17	91.00
18	103.00
19	111.00
20	128.00
21	147.00
22	161.00
23	179.00
24	179.00
27	264.00
30	340.00
32	379.00

COMBINATION SPANNER



Sets	No. of Pcs.	Contents	Price Per Set ₹
88 CP	8	8,9,10,11,13,14,17,19	568.00
12 CP	12	6,7,8,9,10,11,12,13,14,17,19, 22	881.00

Note: Sets packed in rack and shrink wrapped

JUMBO SERIES

Metric (mm)	American (SAE)	Price Per Piece Rs.
33	1.5/16	731.00
34	-	752.00
-	1.3/8	757.00
36	1.7/16	980.00
-	1.1/2	1012.00
41	1.5/8	1379.00
-	1.11/16	1381.00
46	1.3/4	1815.00
-	1.7/8	2053.00
50	2	2085.00

278 - COMBINATION RING (OFFSET)& OPEN END SPANNER -LONG PATTERN



PROFESSIONAL SERIES

Designed for easier operations. Equal openings at both ends. Bihexagon ring end offset at 15° angle and open end set at 15° angle Ring GRIP-RITE Pattern, Forged from Chrome Vanadium Steel.

The Product is based on DIN : 3113

Finish: CP (Chrome Plated Polished Heads)

Metric MM	Price Per Pc. ₹
6	53.00
7	57.00
8	59.00
9	66.00
10	67.00
11	70.00
12	72.00
13	77.00
14	79.00
15	96.00
16	102.00
17	103.00
18	120.00
19	124.00
20	145.00
21	171.00
22	183.00
23	202.00
24	206.00
27	300.00
30	379.00
32	425.00



Sets	No.of Pcs.	Contents	Price Per Set ₹
88 CP	8	8,9,10,11,13,14,17,19	645.00
12 CP	12	6,7,8,9,10,11,12,13,14,17,19,22	1010.00

Note: Sets packed in rack and shrink wrapped

894 - SINGLE OPEN END SPANNER



German Type Engineer's Spanner with a raised collar around the open end. Drop Forged, Chrome Vanadium Steel Head set at 15° angle.

Finish : BF (Black Finish)

The product is based on DIN : 894, and IS-2028

Metric (mm)	Price Per Pc. ₹
7	14.00
8	16.00
9	18.00
10	20.00
11	22.00
12	28.00
13	33.00
14	34.00
15	45.00
16	47.00
17	48.00
18	55.00
19	58.00
22	72.00
24	117.00
27	128.00
30	150.00
32	181.00
34	256.00
36	288.00
38	370.00
41	462.00
46	527.00
50	776.00
55	1008.00
57	1477.00
60	1477.00
65	1518.00
70	2535.00
75	2629.00
80	4984.00
85	6643.00
90	9684.00
95	10050.00
100	11766.00
105	14219.00

Note: Sizes 95mm and above will be produced against confirmed order. Delivery in 8 weeks minimum.

7 - BIHEXAGON RING SPANNER GRIP-RITE CONFIGURATION



Thin walled chamfered rings, heads offset at 15° angle. Long handle for extra leverage. Drop Forged, Chrome Vanadium Steel.

Finish : CS (Chrome Plated)

The Product is based on DIN : 897, IS-2029

GRIP-RITE is a wrench configuration that makes contact on the flat side of the fastener and relieves the fastener corners during operation.

- Prevents mutilation and distortion of fasteners.
- Prevents hydraulic, pneumatic and gas leaks caused by fastener distortion.
- Removes bolts and nuts even if corners are damaged by conventional wrenches.
- Permits accurate torque tension relationship.
- Provides up to 20% more clamping force.

Metric (MM)	American (SAE)	English (WW)	Price Per Pc. ₹
6 x 7	-	-	57.00
8 x 9	-	-	60.00
8 x 10	-	-	60.00
9 x 10	-	-	67.00
10 x 11	3/8 x 7/16	1/8 x 3/16	73.00
10 x 12	-	-	73.00
12 x 13	-	3/16 x 1/4	80.00
12 x 14	7/16 x 1/2	-	81.00
14 x 15	1/2 x 9/16	1/4 x 5/16	93.00
13 x 17	9/16 x 5/8	-	103.00
14 x 17	-	5/16 x 3/8	103.00
16 x 17	5/8 x 11/16	-	103.00
17 x 19	5/8 x 3/4	-	117.00
18 x 19	-	-	119.00
19 x 21	-	-	145.00
19 x 22	-	5/16 x 7/16	147.00
20 x 22	13/16 x 7/8	3/8 x 7/16	147.00
21 x 23	-	7/16 x 1/2	173.00
22 x 24	-	-	195.00
24 x 26	-	7/16 x 9/16	226.00
-	-	1/2 x 9/16	236.00
24 x 27	-	-	236.00
25 x 28	-	9/16 x 5/8	255.00
27 x 32	-	-	312.00
30 x 32	1.1/8 x 1.1/4	9/16 x 11/16	312.00
-	-	5/8 x 3/4	312.00

(In Sets)

Sets	No. of Pcs.	Contents	Price Per Set ₹
4M	4	10x11,12x13,14x15,16x17	332.00
6M	6	6x7, 8x9,10x11, 12x13, 14x15,16x17	443.00
66M	6	8x9,10x11, 12x13,14x15, 16x17,18x19	502.00
7M	7	8x9,10x11,12x13,14x15,16x17, 18x19,20x22	641.00
8M	8	6x7, 8x9, 10x11, 12x13, 14x15, 16x17,18x19, 20x22	695.00
10M	10	6x7,8x9,10x11,12x13,14x15,16x17, 18x19, 20x22, 21x23, 24x27	1084.00
100M	10	6x7,8x9,10x11,12x13,14x15,16x17 18x19, 20x22, 24x27,30x32	1216.00

1010M	10	8x9,10x11,12x13,14x15,16x17, 18x19,20x22, 21x23,24x27,30x32	1326.00
12M	12	6x7, 8x9, 10x11, 12x13, 14x15, 16x17,18x19, 20x22, 21x23, 24x27,25x28,30x32	1623.00
6W	6	1/8x3/16, 3/16x1/4, 1/4x5/16, 5/16x3/8, 3/8x7/16,7/16x1/2	669.00
9W	9	1/8x3/16, 3/16x1/4, 1/4x5/16, 5/16x3/8,3/8x7/16, 7/16x1/2, 1/2x9/16, 9/16x5/8, 5/8x3/4	1472.00

Note: Material can be supplied in CP Finish @ 10% additional price over & above CS price, provided substantial quantities are ordered. Please check with depot incharge or Head office for quantities.

8 - BIHEXAGON RING SPANNER DEEP OFFSET PATTERN GRIP-RITE CONFIGURATION



PROFESSIONAL SERIES



Thin walled chamfered rings ideal to reach recessed fasteners. Forged, Chrome Vanadium Steel.

Finish: CP (Chrome Plated Polished-Heads)

The Product is based on DIN: 838, IS-2029

Metric (MM)	English (WW)	SAE	Price Per Pc ₹
6x7	-	-	63.00
8x9	-	-	69.00
10x11	-	-	86.00
12x13	-	-	91.00
14x15	-	-	109.00
13x17	-	-	134.00
14x17	-	-	134.00
16x17	-	-	138.00
17x19	-	-	160.00
18x19	-	-	162.00
19x22	-	-	200.00
20x22	-	-	200.00
21x23	-	-	245.00
24x26	-	-	318.00
24x27	-	-	332.00
25x27	-	-	358.00
25x28	-	-	358.00
24x30	-	1.1/16x1.1/8	358.00
30x32	-	-	444.00
30x36	-	-	807.00
32x36	3/4X7/8	-	807.00
36x41	7/8X1	-	1023.00
-	7/8X1.1/8	-	2427.00
41x46	1x1.1/8	-	3413.00
46x50	1.1/8x1.1/4	-	4857.00
55x60	-	-	9086.00

(In Sets)

Sets	No. of Pcs.	Contents	Price Per Set ₹
6M	6	6x7, 8x9,10x11, 12x13,14x15, 16x17	541.00
8M	8	6x7,8x9,10x11,12x13, 14x15, 16x17, 18x19, 20x22	893.00
12M	12	6x7, 8x9,10x11,12x13,14x15, 16x17, 18x19, 20x22, 21x23, 24x26,25x27, 30x32	2221.00

Note: Sets packed in rack and shrink wrapped

RING SPANNER

310 - DEEP OFFSET SLOGGING BOX WRENCH



Salient Features :

- : It can be used with a Sledge Hammer
- : The deep offset and the 12 point (Bihexagon) Box end, Both help to manipulate hard-to-reach Nuts.
- : Specially designed to take extra heavy impact load.
- : Forged from High Grade selected Steel.

Finish : Black Finish

Size (MM)	(SAE)	Price per Pc. ₹
30	-	2999.00
32	1.1/4	3326.00
36	1.7/16	5778.00
38	-	6138.00
41	1.5/8	6543.00
46	1.13/16	7388.00
50	2	8071.00
55	2.3/16	11131.00
60	2.3/8	11897.00
65	2.9/16	19417.00
70	2.3/4	20337.00
75	3	22448.00
80	3.3/16	28511.00
85	3.3/8	29120.00
90	3.9/16	30940.00
95	3.3/4	32472.00
100	4	33977.00
105	4.3/16	36716.00
110	4.1/4	45561.00

Note :Please check availability of size 90mm and above with the depot or H.O. before confirming to your buyers.

310 - RH (ROUND HANDLE) DEEP OFFSET BOX WRENCH

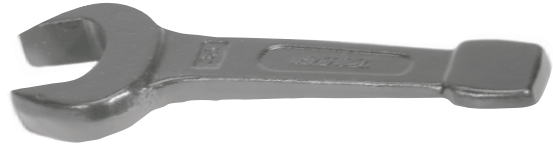


Specially designed Round handle to take pipe extension for extra Leverage. Forged from High Grade Selected Steel.

Finish : Black Finish

Size (MM)	(SAE)	Price Per Pc. ₹
30	-	2737.00
32	1.1/4	3037.00
36	1.7/16	5274.00
38	-	5607.00
41	1.5/8	5974.00
46	1.13/16	6745.00
50	2	7370.00
55	2.3/16	10165.00
60	2.3/8	10862.00
65	2.9/16	17727.00
70	2.3/4	18567.00
75	3	20495.00
80	3.3/16	26034.00
85	3.3/8	26585.00

896 - SLOGGING WRENCH OPEN END



Heavy Duty spanner with strong profiled handle and durable striking end Forged from High Grade Selected Steel with head set at 15° angle.

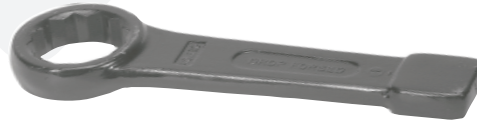
Finish : Black Finish

The product is based on IS : 4508

Size (MM)	(SAE)	(WW)	Price ₹
30	1.3/16	-	611.00
32	1.1/4	3/4	643.00
34	-	-	674.00
36	1.7/16	7/8	708.00
38	-	-	817.00
41	1.5/8	1	925.00
46	1.13/16	1.1/8	1078.00
50	2	1.1/4	1456.00
55	2.3/16	-	1801.00
60	2.3/8	-	2120.00
65	2.9/16	-	3022.00
70	2.3/4	1.3/4	3456.00
75	3	-	4760.00
80	3.3/16	2	6064.00
85	3.3/8	-	8830.00
90	3.9/16	-	12395.00
95	3.3/4	-	17265.00
100	4	-	19358.00
105	4.3/16	-	21183.00
110	-	-	26481.00

Note :- 95mm and above sizes will be produced against confirm order and delivery in 8 weeks minimum.

120 - SLOGGING WRENCH RING END.



Heavy duty spanner with short, strong profiled handle and durable striking end. Forged from High Grade selected steel.

Finish : Black Finish

The product is based on IS : 4509

Size (MM)	(SAE)	(WW)	Price Per Pc. ₹
24	-	-	534.00
27	-	-	540.00
30	1.3/16	-	567.00
32	1.1/4	3/4	590.00
34	1.3/8	-	620.00
36	1.7/16	7/8	643.00
38	1.1/2	-	726.00
41	1.5/8	1	809.00
46	1.13/16	1.1/8	1193.00
50	2	1.1/4	1233.00
55	2.3/16	-	1694.00
60	2.3/8	-	1732.00
65	2.9/16	-	2109.00
70	2.3/4	1.3/4	5241.00
75	3	-	5523.00
80	3.3/16	2	7718.00
85	3.3/8	-	8229.00
90	3.9/16	-	9951.00
95	3.3/4	-	13901.00
100	4	-	14473.00
105	4.3/16	-	15305.00
110	-	-	19898.00

Note : 95 MM and above size will be produced against confirm order and delivery 8 weeks minimum

SLOGGING SPANNERS

SOCKET 12.5 MM (1/2) SQUARE DRIVE AND ACCESSORIES

Manufactured from premium grade Chrome Vanadium Alloy Steel. Everest hand operated sockets are "Precision Hot Pressure Formed". This state of the art technology enables Everest Sockets to attain unsurpassed wear resistance, durability, performance and reliability.

71 BIHEXAGON 12.5 MM SQUARE DRIVE

72 HEXAGON 12.5 MM SQUARE DRIVE



GRIPRITE



PREFERRED

Finish: Chrome Plated

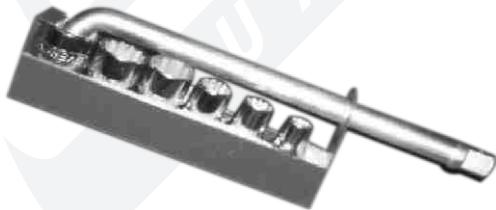
The Product is based on IS: 7381 / DIN 3124-ISO 2725

Sizes			Price
MM	SAE	WW	₹
8	5/16	-	72.00
9	3/8	1/8	72.00
10	13/32	-	72.00
11	7/16	3/16	72.00
12	-	-	75.00
13	1/2	1/4	78.00
14	9/16	-	78.00
15	19/32	5/16	78.00
16	5/8	-	78.00
17	11/16	-	81.00
18	-	3/8	81.00
19	3/4	-	81.00
20	25/32	-	81.00
21	13/16	7/16	89.00
22	7/8	-	89.00
23	-	1/2	96.00
24	15/16	-	97.00
26	1	9/16	97.00
27	1.1/16	-	112.00
28	1.1/8	5/8	112.00
30	1.3/16	11/16	130.00
32	1.1/4	3/4	130.00
33	-	-	138.00
34	-	-	138.00

Note :- Lengths and Weights are approximate.

33mm, 34mm, SAE & WW will be available only in # 72 (Hexagon)

SOCKET SETS # 71 / 72



Stock No.	Content	Price ₹
6M-1	6 Sockets 10,13,14,17,19,22 1 Accessory 84-L Handle - 220mm	677.00



11M-4	11 Sockets 10,11,13,14,17,19,22,24,27,30,32 4 Accessories 80 Ratchet Reversible 265mm 81 Extension Bars 125mm, 250mm 82 Sliding Handle 300mm	2957.00
19 M-5	19 Sockets 11,12,13,14,15,16,17,18,19,20, 21,22,23,24,26,27,28,30,32 5 Accessories 80 Ratchet Reversible 265 mm 81 Extension Bars 125 mm, 250 mm 82 Sliding Handle 300 mm 86 Universal Joint 75mm	4007.00
19 M-6	19 Sockets 11,12,13,14,15,16,17,18,19,20, 21,22,23,24,26,27,28,30,32 6 Accessories 80 Ratchet Reversible 265 mm 81 Extension Bars 125 mm, 250 mm 82 Sliding Handle 300 mm 83 Speed Brace 410 mm 86 Universal Joint 75mm	4367.00
22 M-5	22 Sockets 8,9,10,11,12,13,14,15,16,17,18 19,20,21,22,23,24,26,27,28,30,32 5 Accessories 80 Ratchet Reversible 265 mm 81 Extension Bars 125 mm, 250 mm 82 Sliding Handle 300 mm 86 Universal Joint 75mm	4247.00
22 M-6	22 Sockets 8,9,10,11,12,13,14,15,16,17,18 19,20,21,22,23,24,26,27,28,30,32 6 Accessories 80 Ratchet Reversible 265 mm 81 Extension Bars 125 mm, 250 mm 82 Sliding Handle 300 mm 83 Speed Brace 410 mm 86 Universal Joint 75mm	4607.00
11W-4	11 Sockets WW 1/8,3/16,1/4,5/16,3/8,7/16, 1/2,9/16,5/8,11/16,3/4 4 Accessories 80 Ratchet Reversible 265 mm 81 Extension Bars 125, 250 mm 82 Sliding Handle 300 mm	3057.00
14M-4	14 Sockets 8,9,10,11,12,13,14,15, 16,17,18,19,21,22 4 Accessories 81 Extension Bars 125 mm, 250 mm 82 Sliding Handle 300 mm 84 L-Handle 220 mm	2267.00
14 A-5	14 Sockets SAE 3/8, 7/16, 1/2, 9/16, 5/8, 11/16, 3/4 13/16, 7/8, 15/16, 1, 1.1/16, 1.1/8, 1.1/4 5 Accessories 80 Ratchet Reversible 265 mm 81 Extension Bars 125 mm, 250 mm 82 Sliding Handle 300 mm 83 Speed Brace 410 mm	3857.00

SOCKETRY

80 - RATCHET REVERSIBLE



Finish: Chrome Plated

The Product is based on DIN 3122 / IS : 7975 (Part II)

Length (mm)	Weight (g)	Price Per Piece ₹
265	620	727.00

81 - EXTENSION BARS



Finish: Chrome Plated

The Product is based on IS : 7991 / DIN 3123

Length (mm)	Weight (g)	Price Per Piece ₹
75	110	146.00
125	170	169.00
250	320	231.00

82 - SLIDING HANDLE



Finish: Chrome Plated

The Product is based on IS : 7975 Part II) / DIN 3122

Length (mm)	Weight (g)	Price Per Piece ₹
300	410	254.00

83 - SPEED BRACE



Finish: Chrome Plated

The Product is based on IS : 7975 (Part II)/DIN 3122

Length (mm)	Weight (g)	Price Per Piece ₹
410	830	423.00

84 L- HANDLE



Finish: Chrome Plated

Length (mm)	Weight (g)	Price Per Piece ₹
220	300	165.00
300 HD	580	287.00
450 HD	825	437.00

85 - SWIVEL HANDLE



Finish: Chrome Plated

The Product is based on IS : 7975 (Part II)/DIN 3122

Length (mm)	Weight (g)	Price Per Piece ₹
250		367.00
390	670	386.00

86 - UNIVERSAL JOINT



Finish: Chrome Plated

The Product is based on IS : 7991 / DIN 3123

Length (mm)	Weight (g)	Price Per Piece ₹
75	165	259.00

72- 3/4 HEXAGON

3/4 Square Drive Sockets & Accessories



Finish: Chrome Plated

The Product is based on IS:6131-1980 & 7381-1986

Sizes MM	SAE	Price ₹
22		247.00
24		277.00
27		287.00
28		289.00
	1.1/8	299.00
30		309.00
32		327.00
36		467.00
38		477.00
41		569.00
46		649.00
50		727.00
55		959.00
60		1217.00

Accessories	Length	Price ₹
Extension Bar 81-3/4	200mm	399.00
Extension Bar 81-3/4	400mm	579.00
Sliding Handle 82-3/4	500mm	679.00
L-Handle 84-3/4	450mm	659.00

90 - TAPPING RATCHET HANDLE WITH ADAPTORS



TAPPING RATCHET HANDLE

Tapping Ratchet Handle with adaptors	Weight (g)	Price Per Set ₹
	1430	1654.00

INDIVIDUAL TAPPING RATCHET HANDLE

Length (mm)	Weight (g)	Price Per Pc ₹
465	1050	1287.00

Adaptors

Set of Adaptors (4 pcs) (M10 - M32)	Price Per Set ₹
	425.00
Suitable for Tap Size	Price Per Pc ₹
M10-12	97.00
M14-20	97.00
M22-26	109.00
M27-32	122.00

Adaptors Suitable for M10-M32 & equivalent all SAE / WW

SOCKETRY

351 - PRO COMBINATION PLIER



Sleek design with side cutting and crushing facility for burnt PVC insulated wires. Induction hardened edges, injection moulded sleeves to with-stand upto 1000 volts. Forged from Chrome Vanadium Steel.

Finish: Black Finish.

The product is based on IS : 3650 / DIN 5244
Federal : GGG-P471E

351AS : Combination Plier with injection moulded sleeves.

STOCK NO.	LENGTH (mm)	Price Per Pc. ₹
351-6	150	203.00
351-7	175	215.00
351-8	210	230.00

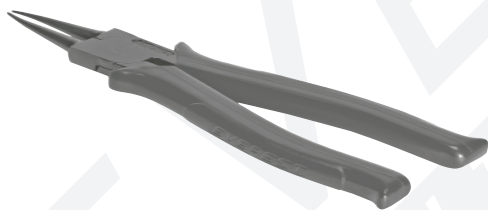
346 - DIAGONAL CUTTING PLIER



For general purpose. Cutting edges induction hardened. Injection Moulded Sleeves. Forged, Chrome Vanadium Steel.
Finish : Black Finish

STOCK NO.	LENGTH (mm)	Price Per Pc. ₹
346-160	160	201.00

378/379 CIRCLIP PLIER



STOCK NO.	LENGTH (mm)	CAPACITY (mm)	Price Per Pc. ₹
378/7 Internal	175	19-60	237.00
379/7 External	175	19-60	237.00
378B/7 Internal	175	19-60	237.00
379B/7 External	175	19-60	237.00

371 - LONG NOSE PLIER



For electronic industry use. Fine serrations diagonally opposed enabling gripping of thinnest wires and components. Injection Moulded Sleeves. Forged from Chrome Vanadium Steel.

Finish : Black Finish

STOCK NO.	LENGTH (mm)	Price Per Pc. ₹
371-5	125	185.00
371-160	160	203.00

372 - BENT NOSE PLIER



For electronic industry use. Fine serrations diagonally opposed enabling gripping of thinnest wires and components. Injection Moulded Sleeves. Forged from Chrome Vanadium Steel.

Finish : Black Finish

STOCK NO.	LENGTH (mm)	Price Per Pc. ₹
372-5	125	196.00
372-160	160	226.00

266 S- GRIP PLIER

EVEREST-SUPER



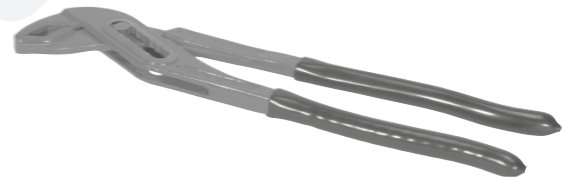
Forged Jaws from Chrome Vanadium Steel, induction hardened. Superior steel handles & release lever. The high tensile knurled head screw facilitates micro adjustments. Effortless unlocking of the jaws.

Finish : NF (Nickle Plated)

The product is based on IS : 10372
Federal : GGG-W-00649 (GSA-FSS)

STOCK NO.	LENGTH (mm)	Price Per Pc. ₹
266-10	250	439.00

59 - BOX JOINT WATER PUMP PLIER



Black Phosphated and powder coated body for double rust protection. Dip Coated Sleeves for slip free gripping only and not for insulation. Chrome Vanadium steel rivet for longer life. Forged from Chrome Vanadium Steel.

Finish : Red powder coated with black PVC Sleeves.

The product is based on DIN : 5231D

STOCK NO.	LENGTH (mm)	Price Per Pc. ₹
59-250	250	266.00

343 - MICROSHEAR



Thin angular profile reduces operation effort. Cutting edges offset at 15° to enable flush cutting. Spring loaded handles with Injection moulded sleeves. High quality alloy steel.

FINISH : Black Finish

STOCK NO.	LENGTH (mm)	Price per pc. ₹
343-5	125	186.00

PLIERS

115 - PIPE WRENCH



American Stillson Pattern

Forged from Chrome Vanadium Steel.

Finish: Handle Red Powder Coated.

The Product is based on

STOCK NO.	LENGTH (mm)	O.D. CAPACITY (mm)	Price per pc ₹
115-8	200	27	238.00
115-10	250	35	243.00
115-12	300	44	330.00
115-14	350	48	397.00
115-18	450	60	646.00
115-24	600	72	1156.00
115-36	900	90	2727.00

Note: Size 200mm to 600 mm Conforms to IS:4003 (Part-I) with certification mark under Licence No.CM/L- 9563695

116R - HEAVY DUTY PIPE WRENCH



A pipe wrench for tough duty jobs, Hook and Heel Jaws forged from alloy Steel

Finish: Handles Red Powder Coated, Hook, fixed jaw and roller black phosphated.

Salient Design Feature:

Specially designed hook to take heavy loads.
Specially designed springs to ensure proper grip in all hook positions. Replaceable yet firmly fixed heel jaw.
Rust preventive coating applied on all bare surfaces.
Bone section designed for higher torques.
The Product Conforms to IS:4003(Part II) with certification mark under Licence No. CM/L-1346243.Based on Federal GGG-W-00-651d (GSA-FSS)

STOCK NO.	LENGTH (mm)	O.D. CAPACITY (mm)		Price per pc ₹
		Min.	Max.	
116R-14	350	14	63	1209.00
116R-18	450	27	76	2807.00
116R-24	600	27	90	2897.00
116R-36	900	38	140	5832.00
116R-48	1200	50	165	10421.00

SPARES - Set of Jaw, roller and spring

STOCK NO.	Price per pc ₹
14	829.00
18	1900.00
24	1971.00
36	3982.00
48	7111.00

66-S ADJUSTABLE WRENCH

EVEREST-SUPER



66 - PS ADJUSTABLE WRENCH

PRO SERIES



Thin tapered jaws, slender handle specially designed for narrow openings.

Forged from Chrome Vanadium Steel.

Finish: BF (Black Finish)

The Product is based on DIN: 3117, IS-6149

STOCK NO.	LENGTH (mm)	EVEREST-SUPER	PRO SERIES
		Price Per Pc. ₹	Price Per Pc. ₹
66-S-150	150	182.00	-
66-S-200	200	232.00	232.00
66-S-250	250	308.00	308.00
66-S-300	300	406.00	406.00

NOTE: **EVEREST-SUPER** Size 200MM TO 300MM Conforms to IS-6149 with certification mark under Licence No.CM/L- 9563796

117 - CHAIN PIPE WRENCH



'ERGO' HANDLE

Salient Design Features:

Specially designed double sided reversible and interchangeable jaw to give longer life. The ribs on the jaw share and minimise the load on holding fasteners. Jaws forged from Alloy Steel. Pipe Handle for reduced weight and easier working.

Finish : Handle Blackened, Jaw Red Lacquered.

STOCK NO.	LENGTH (mm)	CHAIN LENGTH (mm)	O.D. PIPE CAPACITY		Price/ Pc ₹
			Min.	Max.	
117-3	710	475	15	90	2911.00
117-4	920	585	27	115	4683.00
117-6	1100	834	36	165	6873.00
117-8	1250	1100	50	220	10881.00
117-12	1610	1360	50	300	16438.00

117 - SOLID HANDLE

Best quality chains tested to proof torque as per ISI Standard.

STOCK NO.	LENGTH (mm)	CHAIN LENGTH (mm)	O.D. PIPE CAPACITY (mm)		Price/ Pc ₹
			Min.	Max.	
117-3	710	475	15	90	3249.00
117-4	920	585	27	115	5220.00
117-6	1100	834	36	165	7667.00
117-8	1250	1100	50	220	12143.00
117-12	1610	1360	50	300	18329.00

The Product Conforms to IS : 4123 with certification mark under Licence No. CM/L - 2052938

SPARES

STOCK NO.	Jaw	Chain
	Price Per Set ₹	Price per pc ₹
117-3	1377.00	675.00
117-4	1935.00	1341.00
117-6	3018.00	1817.00
117-8	3934.00	3708.00
117-12	6111.00	6552.00

WRENCHES

74 - DOUBLE ENDED HEXAGONAL SOLID BOX WHEEL WRENCH

NEW 500MM



GRIPRITE

Special Alloy Steel

Finish: **BF-Black Finish**

Based on IS:2030

SIZE mm	LENGTH mm	Price ₹	LENGTH mm	Price ₹
22x24	355	500.00	-	-
24x27	355	525.00	-	-
27x30	400	547.00	500	657.00
27x33	400	547.00	500	657.00
30x32	400	547.00	500	657.00
33x33	400	547.00	500	657.00
32x32	400	547.00	500	657.00
32x33	400	547.00	500	657.00
32x36	-	-	500	717.00

78 - TOMMY BAR FOR WHEEL WRENCH

Selected Carbon Steel.

DIA	LENGTH mm	Price Per Pc. ₹
20	400 mm	160.00
20	750 mm	272.00

75 - SINGLE ENDED HEXAGONAL SOLID BOX WHEEL WRENCH

Special Alloy Steel, Finish: **BF-Black Finish**

CS-Chrome Plated, Based on IS:2030

SIZE mm	LENGTH mm	Price per pc. ₹
19	270	306.00
24	180	237.00
27	400	396.00
30	400	418.00
33	400	455.00

76 - 'L' TYPE WHEEL SPANNERS HEXAGON HEAD



* operating Hole Available with **JACK LEVER**

Selected Special Alloy Steel.

Finish : **CS-Chrome Plated Finish.**

STOCK NO.	SIZE	LENGTH mm	Price Per Pc ₹
76-001/18	18mm	240	140.00
* 76-003/19	19mm	300	167.00
* 76-106/19	19mm	260	134.00
* 76-907/19	19mm	275	187.00
* 76-517/13/16	13/16SAE	300	167.00
* 76-040/21	21mm	275	134.00

HAMMER *EVEREST-SUPER*

#606 BALL PEIN

608 CROSS PEIN



Hammer heads Forged from Selected Steel with good quality knotless seasoned wooden handles.

Finish : **Heads in BF Finish**

The product is based on IS : 841

STOCK NO.	STOCK NO.	Price Per Pc (With Handle) ₹
606-200	608-200	171.00
606-500	608-500	271.00
606-600	608-600	317.00
606-800	608-800	366.00

256R - BOLT CUTTERS



A high performance Bolt Cutter designed to cut medium tensile and soft bolts, rod rivets, bars and chains upto specified hardness. Blades Forged from Special Alloy Steel and Interchangeable. Specially designed housing enables adjustment of gap between blades to carry out specific jobs and resetting of cutting edges after sharpening.

Finish : **Handles Red Lacquered, Blades Black Finish.**

The product is based on IS : 5200

STOCK No.	LENGTH mm	Cutting Capacity (25 HRC Max.)		Price Per Pc. ₹
		Threaded Bolt	Round Bar	
256R-18	450	8	6	1868.00
256R-24	600	12	10	2281.00
256R-30	750	14	12	2952.00

SET OF SPARE BLADES FOR BOLT CUTTER

STOCK No.	Price Per Pc. ₹
256-R-18	1236.00
256-R-24	1532.00
256-R-30	2080.00

Note : Spare set consists of One set of Blade with guide plates and fasteners

720 - PULLER TWO LEGS



730 - PULLER THREE LEGS

Screw type pullers for removing gear wheels, pulleys, ball bearing etc., operated with a wrench. Legs Forged from Chrome Vanadium Steel.

Finish : **Arms Links Chrome Plated other Black Finish.**

The product is based on IS : 9193 FEDERAL : GGG-P-781D

STOCK NO.	Price Per Pc ₹	STOCK NO.	Price Per Pc ₹	SPREAD mm
720-6	1798.00	730-6	1927.00	25 150
720-8	2042.00	730-8	2229.00	35 200
720-10	2749.00	730-10	2956.00	40 250
		730-12	5128.00	50 300

SCREW DRIVERS - PRO SERIES



Ergonomic Handle Design • Fully Hardened Blade of High Grade Steel • Magnetised Tip • Hang hole for storage & also for applying extra torque • The product is based on IS : 844

52 ENGINEER PATTERN ⊖

Stock No.	Blade Size (mm)	Tip Size (mm)	Price Per Pc. ₹
517	3.5x75	3.5x0.5	32.00
518	4x100	4.0x0.6	39.00
519	4x125	4 x 0.6	45.00
520	5 x 75	5 x 0.6	38.00
521	5 x 100	5 x 0.6	51.00
522	6 x 125	5.5 x 0.8	56.00
523	6 x 150	5.5 x 0.8	58.00
524	6 x 200	6 x 0.8	60.00
525	6 x 300	6 x 0.8	67.00
526	8 x 150	8 x 1.2	89.00
527	8 x 200	8 x 1.2	96.00
528	8 x 250	8 x 1.2	108.00
529	8 x 300	8 x 1.2	116.00
530	6 x 100	6 x 0.6	48.00
531	6 x 250	6 x 0.8	65.00

73 - PHILIPS PATTERN ⊕

Stock No.	Blade Size (mm)	Tip Size (mm)	Price Per Pc. ₹
731	5 x 75	1	43.00
732	6 x 100	2	59.00
733	8 x 150	3	91.00
736	5 x 200	1	50.00
737	6 x 250	2	88.00
738	8 x 250	4	107.00
739	5 x 150	1	50.00
740	5 x 100	1	48.00
741	6 x 150	2	74.00
742	6 x 200	2	80.00
743	8 x 250	3	107.00

61 - ENGINEERS PATTERN ⊖ INSULATED

Stock No.	Blade Size (mm)	Tip Size (mm)	Price Per Pc. ₹
611	3 x 50	3 x 0.4	34.00
612	3 x 80	3 x 0.5	35.00
613	4 x 100	4 x 0.5	37.00
614	4 x 100	4 x 0.6	38.00
615	5 x 125	5 x 0.6	53.00
616	5 x 200	5 x 0.8	58.00
617	5 x 250	5 x 0.8	60.00
618	5 x 300	5 x 0.8	61.00
619	5x 150	5 x 0.8	56.00

91 - ENGINEERS PATTERN ⊖ HEAVY DUTY

Stock No.	Blade Size (mm)	Tip Size (mm)	Price Per Pc. ₹
913	10 x 200	10 x 1.6	134.00
914	10 x 250	10 x 1.6	147.00
915	10 x 300	10 x 1.6	161.00
916	10 x 400	12 x 2.0	183.00
917	10 x 450	12 x 2.0	193.00

40 TWO IN ONE



Reversible Two-in-one Screw Driver. Blades from High Grade Steel Chrome Plated, with Magnetised Tip. The product is based on IS : 844

Stock No.	Blade Size (mm)	Tip Size	Price Per Pc. ₹
411	6x60	0.8x6/Philips No.2	49.00
412	6x90	0.8x6/Philips No.2	52.00
417	6x140	0.8x6/Philips No.2	65.00
434	6x250	0.8x6/Philips No.2 (Insulated)	82.00
435*	3.5, 5.0x200	0, 1	69.00
436*	5.0, 6.0x200	1, 2	94.00
437*	6.0, 8.0x200	2, 3	132.00

*Both end Philips

41 DOMESTIC LINE TESTER



New Pro-series line tester with Neon Bulb and Blade made from High Grade Steel Chrome Plated, with Magnetised Tip. The product is based on IS : 5579

Stock No.	Overall Length (mm)	Price Per Pc. ₹
424 - Pro Series	130	51.00
* 426 - Pro Series	175	62.00

717 - SCREW DRIVER SET



Stock No.	Description	Price Per Pc. ₹
717	6 PCS. Screw Driver Set consisting of : Handle with phase tester Philips 3.5x125, Philips 5x125 Engg. S.Driver 3.5x125 Engg. S.Driver 6x125 Poker 125	184.00

2019 - DOMESTIC TOOL KIT



STOCKNO.	CONTENT	Price Per Pc. ₹
2019	- Combination Plier 150mm - Screw Driver Two In One 6 x 90mm - Line Tester - Water Pump Plier 59/10RBF with Black PVC Sleeves - Hammer 200 gms - Adjustable Wrench 200 mm BF - Tool Bag	1097.00

SPECIAL PURPOSE TOOLKIT

TOOL KIT NO 1002 FOR TUBE WELLS



Price
₹ 31057.00

SPECIFICATIONS

Size of Box : 560 x 280 x 310 mm

Weight : 20Kgs (Approx)

SALIENT FEATURES

- A convenient portable tool box made out of superior steel sheet.
- Two channel mounted drawers, specially designed lid and fixed compartment are provided for appropriate storage of assorted tools.
- Can be easily moved on four castors at work site.

APPLICATIONS

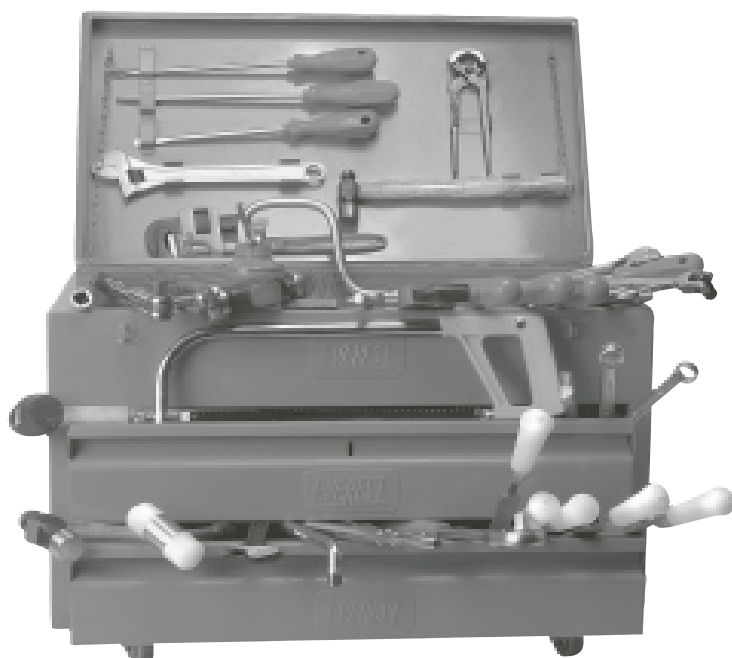
- For installation & maintenance of Deep Well.

Total numbers of contents of Tool Chest : 32 Nos.

Contents

Description	Pcs.
● 'EVEREST' Bi Hexagon Ring Spanner 21x23 mm	2
● 'EVEREST' Double Open End Spanner 6x7 - 20x22 mm	8
7/16 X 1/2 ww	2
● 'EVEREST' Heavy Duty Pipe Wrenches 350 & 450 mm	2
● 'EVEREST' Grip Lock Plier 250 mm	1
● 'EVEREST' Screw Drivers Engineer pattern 5x75 & 8x200 mm	2
● 'EVEREST' Ball Pein Hammer 500 gms	1
● 'EVEREST' Adjustable Wrench 300 mm	1
● Bolt Die Set 1/2"BSW	1
● Chain Pipe Vice 50 mm	1
● Cold Chisel 150 mm	1
● Flat File 250 mm with handle	1
● Hacksaw Frame 300 mm	1
● Spirit Level 200 mm	1
● Measuring Tape Steel 2 mtrs	1
● Oil Can	1
● Pipe Clamp	2
● Die Set 1.1/4 - 1.1/2 BSP	1
● Tommy Bar 460 mm	1
● Wire Brush	1
● Tool Chest	

TOOL KIT NO.1003 FOR MECHANICS



Price
₹ 50517.00

SPECIFICATIONS

Size of Box : 660 x 380 x 410 mm
Weight : 41 Kgs (Approx)

SALIENT FEATURES

- Tool Chest made out of heavy guage steel sheet for long lasting, strength and protection.
- Two drawers storage area, working on heavy duty slides.
- Carefully selected sets of essential tools clearly arranged to provide fast convenient selection.
- Can be easily moved on four castors at work site.
- Rugged side handle for lifting and pulling of Tool Chest.

APPLICATIONS

- A popular tool kit with mechanics in the industrial field.
- For repair and maintenance of all mechanical equipments, engines and other machinery.

Total number of contents of Tool Chest : 111 Nos.

Contents

Description	Pcs.	Description	Pcs.
● 'EVEREST' Bi Hexagon Ring Spanner 6x7 - 30x32 mm	12	● 'EVEREST' Swivel Handle 390 mm	1
● 'EVEREST' Double Open End Spanner 6x7 - 30x32 mm	12	● 'EVEREST' Universal Joint 75 mm	1
● 'EVEREST' Stillson Pipe Wrench 250 & 300 mm	2	● Allen Key 1.5 -10, 12 mm	10
● 'EVEREST' Grip Lock Plier 250 mm	1	● C-Clamp 50 mm	1
● 'EVEREST' Circlip Plier Internal 175 mm	1	● Centre Punches 125,150 & 200 mm	3
● 'EVEREST' Circlip Plier External 175 mm	1	● Cold Chisel 150 & 200 mm	2
● 'EVEREST' Diagonal Cutting Plier 160 mm	1	● Flat File with handle 150 mm	1
● 'EVEREST' Combination Plier 150 & 210 mm	2	● Hacksaw Blades 300 mm	10
● 'EVEREST' Nose Plier 160 mm	1	● Hacksaw Frame 300 mm	1
● 'EVEREST' Screw Driver Phillips Pattern 8x150 & 8x250 mm	2	● Half Round File II Cut with handle 200 mm	1
● 'EVEREST' Ball Pein Hammer 500 & 800 Gms	2	● Mill File II Cut with handle 200 mm	1
● 'EVEREST' Screw Drivers Engineer Pattern 5x100 , 6x125 & 8x150 mm	3	● Torque Wrench, T-50	1
● 'EVEREST' Screw Drivers Electrician Pattern 4x100 & 5x125 mm	2	● Measuring Tape Steel, 2 Mtrs	1
● 'EVEREST' Screw Drivers Engineer Pattern 10x200, 10x250 & 10x300 mm	3	● Oil Can	1
● 'EVEREST' Adjustable Wrench 200 & 300 mm	2	● Rubber Mallet	1
● 'EVEREST' 12.5 Square Drive Bi Hexagon sockets 10-24, 26-28,30,32 mm	20	● Stainless Steel Scale 300 mm	1
● 'EVEREST' Reversible Ratchet 265 mm	1	● Feeler Gauge Set of 10 Blades (in mm)	1
● 'EVEREST' Extension Bar 125 & 250 mm	2	● Wire Brush	1
● 'EVEREST' Sliding Bar 300 mm	1	● Tool Chest	1
● 'EVEREST' Speed Brace 410 mm	1		

TOOL KIT NO.1004 FOR INSTALLATION AND MAINTENANCE OF SUBMERSIBLE PUMPS



SPECIFICATIONS

Size of Box : 485 x 255 x 100 mm

Weight : 19 Kgs (Approx)

SALIENT FEATURES

- Heavy duty tool chest made out of superior steel sheet for long lasting strength.
- A lift up tray, fixed compartment and a specially designed lid is provided for appropriate storage of necessary tools.
- Heavy duty front handle for lifting tool chest.
- Handy & Portable Tool Kit.

APPLICATIONS

- For installation of submersible horizontal / vertical water pump.

Total numbers of contents of Tool Chest : 33 Nos.

Price
₹ 17957.00

Contents

Description	Pcs.
● 'EVEREST' Bi Hexagon Ring Spanner 6x7 - 20x22 mm	8
● 'EVEREST' Double Open End Spanner 6x7 - 16x17 mm	6
● 'EVEREST' Heavy Duty Pipe Wrenches 350 & 450 mm	2
● 'EVEREST' Combination Plier 210 mm	1
● 'EVEREST' Nose Plier 160 mm	1
● 'EVEREST' Adjustable Wrench 300 mm	1
● 'EVEREST' Screw Drivers Engineer Pattern 6x200, 8x250 & 10x250 mm	3
● 'EVEREST' Line Tester 130 mm	1
● 'EVEREST' Engineers Hammer 800 gms	1
● Cold Chisel 150 & 300 mm	2
● Flat File with Handle 250 mm	1
● Grease Gun, Push type	1
● Hacksaw Frame 300 mm	1
● Spirit Level 200 mm	1
● Measuring Tape Steel 2 Mtrs	1
● Triangular File with Handle 250 mm	1
● Wire Brush	1
● Tool Chest	

TOOL KIT NO.1005 FOR MAINTENANCE & REPAIR PUMPS



Price
₹ 8267.00

SPECIFICATIONS

Size of Box : 485 x 220 x 155 mm
Weight : 7 Kgs (Approx)

SALIENT FEATURES

- Heavy Duty tool chest made out of superior steel sheet for long lasting strength.
- A fixed compartment and a specially designed lid with clamp to hold tools.
- Handy & easily portable Tool kit.
- Heavy duty front handle for comfortable lifting.

APPLICATIONS

- For maintenance of submersible, horizontal / vertical water pumps.

Total numbers of contents of Tool Chest : 18 Nos.

Contents

Description	Pcs.
● 'EVEREST' Double Open End Spanner 6x7 - 16x17 mm	6
● 'EVEREST' Stillson Pipe Wrench 350 & 450 mm	2
● 'EVEREST' Combination Plier 210 mm	1
● 'EVEREST' Nose Plier 160 mm	1
● 'EVEREST' Adjustable Wrench 300 mm	1
● 'EVEREST' Screw Driver Engineers pattern 6x200, 8x250 & 10x250 mm	3
● 'EVEREST' Line Tester 130 mm	1
● 'EVEREST' Ball Pein Hammer 800 gms	1
● Air Hand Pump	1
● Grease gun, Push type	1
● Tool Chest	

TOOL KIT NO.1006 LINEMAN TOOL KIT WITH CANVAS BAG



SPECIFICATION

Size of Box : 415 x 170 x 375 mm
Weight : 7 kgs (Approx)

SALIENT FEATURES

- Sturdy canvas Tool kit bag with pockets provided for easy extraction and replacement of tools.
- Convenient to carry up on electric poles by slinging around the shoulder.
- Light in weight and allows comfortable access to tools even at the top of the pole.
- Bag reinforced with metallic frame to retain its shape.

APPLICATIONS

- For local fault, repair & maintenance on electrical poles/ lines.

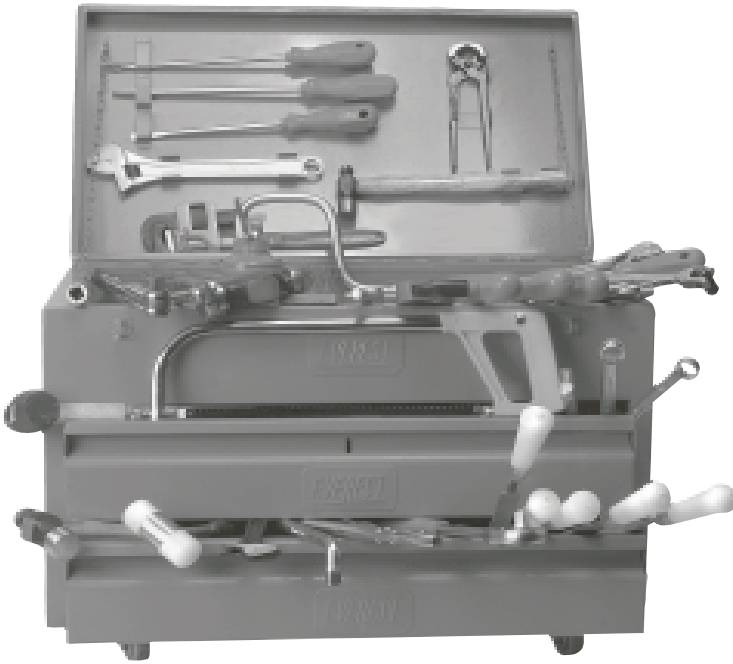
Total numbers of contents of Tool Bag : 45 Nos.

Price
₹ 9797.00

Contents

Description	Pcs.
● 'EVEREST' Bi Hexagon Ring Spanner 6x7 - 20x22 mm	8
● 'EVEREST' Double Open End Spanner 6x7 - 30x32 mm	12
● 'EVEREST' Combination Plier 210 mm	1
● 'EVEREST' Nose Plier 160 mm	1
● 'EVEREST' Screw Drivers Engineer Pattern 5x75, 6x150 & 8x300 mm	3
● 'EVEREST' Engineers Hammer 500 gms	1
● 'EVEREST' Diagonal Cutting Plier 160 mm	1
● Fuse Wire Roll	1
● Hacksaw Blades 300 mm	10
● Hacksaw Frame 300 mm	1
● Insulation Tape ,PVC	1
● Pocket Knife	1
● Measuring Tape Steel 2 Mtrs	1
● Hand Gloves of Pair	1
● Testing Holder	1
● Torch with 3 Cells	1
● Canvas Tool Bag	1

TOOL KIT NO.1007 ELECTRICIAN FITTER TOOL KIT



Price
₹ 52287.00

SPECIFICATION

Size of Box : 660 x 380 x 410 mm

Weight : 42 Kgs (Approx)

SALIENT FEATURES

- Tool Chest made out of superior steel sheet for long lasting strength and protection.
- Carefully selected sets of essential tools clearly arranged to provide fast convenient selection.
- Can be easily moved on four castors at work site.
- Sliding tray for holding the light range of tools.
- Specially designed lid with clamp to hold tools.

APPLICATIONS

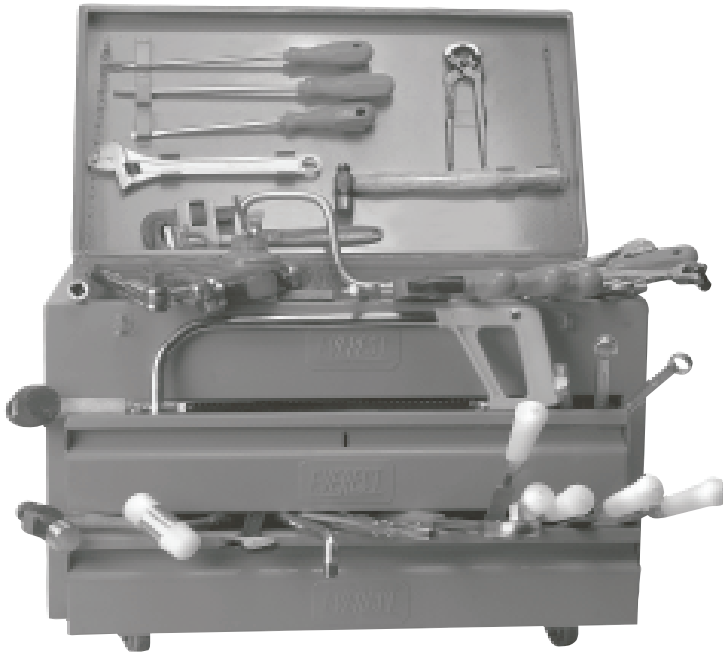
- For repair and maintenance of power generating units.
- For use in heavy electrical installations.

Total number of contents of Tool Chest : 99 Nos.

Contents

Description	Pcs.	Description	Pcs.
● 'EVEREST' Bi Hexagon Ring Spanner 6x7 - 30x32 mm	12	● Allen Key 1.5-10, 12 mm	10
● 'EVEREST' Double Open End Spanner 6x7 - 30x32 mm	12	● C-Clamp 50 mm	1
● 'EVEREST' Stillson Pipe Wrench 250 mm	1	● Centre Punches 100 mm	1
● 'EVEREST' Grip Lock Plier 250 mm	1	● Cold Chisel 100,150 & 200 mm	3
● 'EVEREST' Combination Plier 150 mm	1	● Hacksaw Frame 300 mm	1
● 'EVEREST' Diagonal Cutting Plier 160 mm	1	● Half Round File II cut with handle 250 mm	1
● 'EVEREST' Adjustable Wrenches 200 & 250 mm	2	● Round File II cut with handle 250 mm	1
● 'EVEREST' Ball Pein Hammer 200 & 500 gms	2	● Mill File with handle 250 mm	1
● 'EVEREST' Screw Drivers Engineer Pattern 5x100, 6x125, 8x150 & 8x200 mm	4	● Torque Wrench, T-50	1
● 'EVEREST' Screw Drivers Elect Pattern Insulated 4x100, 5x125, 5x200 & 5x300 mm	4	● Pincer 200 mm	1
● 'EVEREST' Screw Drivers Philips Pattern 6x100 & 8x150 mm	2	● Measuring Tape Steel 2 Mtrs	1
● 'EVEREST' 12.5 Square Drive Bi Hexagon Sockets 8-24,26-28,30,32 mm	22	● Stainless Steel Scale 150 mm	1
● 'EVEREST' Reversible Ratchet 265 mm	1	● Feeler Gauge set of 10 blades (in mm)	1
● 'EVEREST' Extension Bar 75,125 & 250 mm	3	● Oil Can	1
● 'EVEREST' Sliding Bar 300 mm	1	● Wire Brush	1
● 'EVEREST' Speed Brace 410 mm	1	● Tool Chest	1
● 'EVEREST' L-Handle 220 mm	1		
● 'EVEREST' Swivel Handle 390 mm	1		
● 'EVEREST' Universal Joint 75 mm	1		
● 'EVEREST' Water Pump Plier 250 mm	1		

TOOL KIT NO.1008 GARAGE MAINTENANCE KIT



Price
₹ 43877.00

SPECIFICATION

Size of Box : 660 x 380 x 410 mm

Weight : 42 Kgs (Approx)

SALIENT FEATURES

- Tool Chest made out of superior steel sheet for long lasting strength and protection.
- Drawers mounted on Heavy Duty Slides.
- Carefully Selected sets of essential tools clearly arranged to provide fast convenient selection.
- Can be easily moved on four castors at work site.
- Heavy duty side handles for lifting and pulling Tool Chest.

APPLICATIONS

- For automotive repair and maintenance in motor garages.
- For companies having their own fleet of cars and staff bus.
- Maintenance work of state transport undertakings.

Total number of contents of Tool Chest : 72 Nos.

Contents

Description	Pcs.	Description	Pcs.
● 'EVEREST' Bi Hexagon Ring Spanner 6x7 - 30x32 mm	12	● Centre Punches 125 mm	1
● 'EVEREST' Double Open End Spanner 6x7 - 30x32 mm	12	● Cold Chisel 100, 150, 200 mm	3
● 'EVEREST' Grip Lock Plier 250 mm	1	● Torque Wrench T-50	1
● 'EVEREST' Circlip Plier Internal 175 mm	1	● Pin Punch 100 mm (set of 4 pcs)	1
● 'EVEREST' Circlip Plier External 175 mm	1	● Plastic Tip Hammer (Big Head)	1
● 'EVEREST' Diagonal Cutting Plier 160 mm	1	● Plastic Tip Hammer (Small Head)	1
● 'EVEREST' Combination Plier 210 mm	1	● Feeler Gauge set of 10 Blades (in mm)	1
● 'EVEREST' Long Nose Plier 160 mm	1	● Tool Chest	1
● 'EVEREST' Water Pump Plier 250 mm	1		
● 'EVEREST' Adjustable Wrench 300 mm	1		
● 'EVEREST' Ball Pein Hammer 500 & 800 gms	2		
● 'EVEREST' Screw Drivers Engineer Pattern 6x200, 8x200 & 10x200 mm	3		
● 'EVEREST' 12.5 Square Drive Bi Hexagon Sockets 10-24,26-28,30, 32 mm	20		
● 'EVEREST' Reversible Ratchet 265 mm	1		
● 'EVEREST' Extension Bar 125 & 250 mm	2		
● 'EVEREST' Sliding Bar 300 mm	1		
● 'EVEREST' Speed Brace 410 mm	1		
● 'EVEREST' Universal Joint 75 mm	1		

TOOL KIT NO.1009 HEAVY EARTH MOVING EQUIPMENT KIT



Price
₹ 64127.00

SPECIFICATIONS

Size of Box : 790 x 385 x 410 mm
Weight : 40 Kgs (Approx)

SALIENT FEATURES

- Tool Chest made out of heavy gauge steel sheet for long lasting strength and protection.
- Drawers mounted on Heavy duty Slides.

APPLICATIONS

- For maintenance of Earth Movers / Excavators / Caterpillars.
- With drilling rigs during Metals / Minerals / Oil Exploration.

Total number of contents of Tool Chest : 148 Nos.

Contents

Description	Pcs.	Description	Pcs.
● 'EVEREST' Bi Hexagon Ring Spanner 6x7 - 30x32 mm	12	● "EVEREST" L-Handle 220 mm	1
● 'EVEREST' Double Open End Spanner 6x7 - 30x32 mm	12	● "EVEREST" Swivel Handle 390 mm	1
● 'EVEREST' Combination Spanner SAE 1/4,5/16,3/8,7/16,1/2,9/16,5/8, 11/16,3/4,13/16,7/8,15/16	12	● "EVEREST" Universal Joint 75 mm	1
● 'EVEREST' Stillson Pipe Wrench 250 & 300 mm	2	● Allen Key 1/16" - 3/8"	10
● 'EVEREST' Circlip Plier Internal 175 mm	1	● Allen Key 1.5 - 10 mm	9
● 'EVEREST' Circlip Plier External 175 mm	1	● Torque Wrench 250 mm	1
● 'EVEREST' Diagonal Cutting Plier 160 mm	1	● C-Clamp 50 mm	1
● 'EVEREST' Combination Plier 150 & 210 mm	2	● Rubber Mallet	1
● 'EVEREST' Long Nose Plier 160 mm	1	● Pincer 150 & 200 mm	2
● 'EVEREST' Water Pump Plier 250 mm	1	● Cold Chisel 100, 150 & 200 mm	3
● 'EVEREST' Adjustable Wrench 200 & 300 mm	2	● Hacksaw Frame 300 mm	1
● 'EVEREST' Ball Pein Hammer 200 & 500 gms	2	● Hacksaw Blades 300 mm	10
● 'EVEREST' Screw Drivers Engineer pattern 6x125, 8x150 & 10x200 mm	3	● Half Round File II cut with handle 200 mm	1
● 'EVEREST' Screw Drivers Elect. pattern Insulated 4x100, 5x200 & 5x250 mm	3	● Mill File with handle 250 mm	1
● 'EVEREST' Screw Drivers Phillips pattern 5x75, 6x100 & 8x150 mm	3	● Flat File with handle 150 mm	1
● 'EVEREST' 12.5 Square Drive Bi Hexagon Sockets 8-24,26-28, 30 mm	21	● Centre Punches 100, 125 & 150 mm	3
● 'EVEREST' 12.5 Square Drive Hexagon Sockets 5/16,3/8,13/32,7/16,1/2,9/16,19/32,5/8, 11/16,3/4,25/32,13/16,7/8,15/16,1"	15	● Feeler Gauge set of 10 Blades (in mm)	1
● 'EVEREST' Grip Lock Plier 250 mm	1	● Feeler Gauge set of 10 Blades (in Inches)	1
● 'EVEREST' Reversible Ratchet 265 mm	1	● Feeler Gauge set of 20 Blades (in mm)	1
● 'EVEREST' Extension Bar 75, 125 & 250 mm	3	● Feeler Gauge set of 26 Blades (in Inches)	1
● 'EVEREST' Sliding Bar 300 mm	1	● Stainless Steel Scale 150 & 300 mm	2
		● Measuring Tape Steel 2 Mtrs	1
		● Wire Brush	1
		● Grease Gun, Lever type	1
		● Oil Can	1
		● Tool Chest	1



TOOLKIT NO.1010 PLANT MAINTENANCE KIT



Price
₹ 21997.00

SPECIFICATIONS

Size of Box : 485 x 220 x 155 mm

Weight : 20 Kgs (Approx)

SALIENT FEATURES

- Heavy Duty tool chest made out of superior steel sheet for long lasting strength.
- A fixed compartment and a specially designed lid with clamp to hold tools.
- Handy & easily portable Tool kit.
- Heavy duty front handle for comfortable lifting.

APPLICATIONS

- Ideal for Industrial Plant maintenance.

Total numbers of contents of Tool Chest : 81 Nos.

Contents

Description	Pcs.	Description	Pcs.
● 'EVEREST' Double Open End Spanner 6x7 - 30x32 mm	12	● 'EVEREST' Water Pump Plier 250 mm	1
● 'EVEREST' Bi Hexagon Ring Spanner 6x7 - 30x32 mm	12	● Torque Wrench T-50	1
● 'EVEREST' Stillson Pipe Wrench 250 & 300 mm	2	● Allen key 1.5 - 10, 12 mm	10
● 'EVEREST' Adjustable Wrench 200 & 300 mm	2	● Allen key 1/16 - 3/8 sae	10
● 'EVEREST' Screw Drivers Engineer pattern 6x150, 6x125, 8x150, 10x200, 10x250 & 10x300 mm	6	● Hacksaw Frame 300 mm	1
● 'EVEREST' Screw Drivers Electrician pattern 4x100 & 5x125 mm	2	● Hacksaw Blades 300 mm	10
● 'EVEREST' Ball Pein Hammer 500 & 800 gms	2	● Cold Chisel 150 & 200 mm	2
● 'EVEREST' Combination Plier 210 mm	1	● Flat File II cut 150mm with handle	1
● 'EVEREST' Circlip Plier Internal 175 mm	1	● Half Round File II cut 200mm with handle	1
● 'EVEREST' Circlip Plier External 175 mm	1	● Feeler Gauge set 10 Blades (in mm)	1
● 'EVEREST' Grip Lock Plier 250 mm	1	● Stainless Steel Scale 300 mm	1
		● Tool Chest	1



TOOLKIT NO.1011 VEHICLE MECHANIC'S KIT



Price
₹ 9327.00

SPECIFICATIONS

Size of Box : 485 x 220 x 155 mm
Weight : 12.5 Kgs (Approx)

SALIENT FEATURES

- Heavy Duty tool chest made out of superior steel sheet for long lasting strength.
- A fixed compartment and a specially designed lid with clamp to hold tools.
- Handy & easily portable Tool kit.
- Heavy duty front handle for comfortable lifting.

APPLICATIONS

- Ideal for Vehicle maintenance garages.

Total numbers of contents of Tool Chest : 54 Nos.

Contents

Description	Pcs.	Description	Pcs.
● 'EVEREST' Bi Hexagon Ring Spanner 6x7 - 30x32 mm	12	● 'EVEREST' 12.5 Square Drive Hexagon Sockets 8, 10,13,17 & 19 mm	5
● 'EVEREST' Double Open End Spanner 6x7 - 30x32 mm	12	● 'EVEREST' Grip Lock Plier 250 mm	1
● 'EVEREST' Diagonal Cutting Plier 160 mm	1	● 'EVEREST' Extension Bar 75 mm	1
● 'EVEREST' Combination Plier 210 mm	1	● Allen Key,1.5 to 10 mm	9
● 'EVEREST' Nose Plier 160 mm	1	● Flat File 200 mm with handle	1
● 'EVEREST' Circlip Plier Internal 175 mm	1	● Round File 200 mm with handle	1
● 'EVEREST' Circlip Plier External 175 mm	1	● Feeler Gauge set of 10 Blades (in mm)	1
● 'EVEREST' Water Pump Plier 250 mm	1	● Tool Chest	1
● 'EVEREST' Hammer 200 gms	1	-----	
● 'EVEREST' L - Handle 220 mm	1		
● 'EVEREST' Screw Driver Two in One 6x90 mm	1		
● 'EVEREST' Screw Drivers Engineer pattern 6x150 , 8x300 mm	2		

ALL INDIA SALES NETWORK

ANDHRA PRADESH : 307, Diamond Tower, 1-1- 37/38,
Main Guard Road, Opp. Manju Theatre, S.D. Road,
Secunderabad - 500 003.
Tel. : 040-27816108, 66312344,
Mobile: 09885166969 / 09290201733
E-mail : secunderabad@everesttools.com

ASSAM & NORTH EAST STATES : Mobile-09748718054
E-mail : assam@everesttools.com

BIHAR & JHARKHAND : Mobile - 09631659262
E-mail : bihar@everesttools.com

CHATTISGARH : A-1, Purohit Plaza Ramsagarpara Main
Road, Raipur-492 001, Tel. : 0771-3299451
Mobile: 09977190055 / 09425213302
E-mail : raipur@everesttools.com

DELHI & HARYANA: 46, Dohil Chambers, Nehru Place,
New Delhi - 110 019
Ph.011-466 92600, Fax: 011-41606788
e-mail:domestic@everesttools.com

GUJARAT (New Address) : 4 Swaminarayan Estate,
Near Ujala Chowkdi, Sarkhej, Ahmedabad - 382 210
Ph.: 09662022982 / 09724537543
E-mail : ahmedabad@everesttools.com

KARNATAKA : Corporation No. 48, 1st Cross
S.G.Narayan Layout, Lal Bagh Road, Bangalore - 560027
Tel.: 080-41496606 Mobile:09845965717
E-mail: bangalore@everesttools.com

MADHYA PRADESH:128, Shastri Market, Indore, 452007
Tel: 0731-2540885, 2536664, Fax No.:0731-2433918
Mobile:09826288660/09826024245
E-mail : indore@everesttools.com

JABALPUR : Mobile- 09826288660
E-mail : jabalpur@everesttools.com

MAHARASHTRA, GOA: Jayesh Bungalow, Waliv,
Vasai (East), Distt. Thane - 401208
Tel.: 0250-6523082 Telefax: 0250-2452987
Mobile:09890082870 / 09096011608
E-mail : thane@everesttools.com

PUNJAB, HIMACHAL AND J&K :
79, Hall Bazar, Amritsar - 143 001
Tel. : 0183-2544375, 2548626
Mobile :09888327513 /09888898512
E-mail : amritsar@everesttools.com

RAJASTHAN-A-3, D.S.Tower, Transport Nagar
Jaipur - 320 004
Tel. : 0141-2641925/26, Mobile:09829152396
E-mail : jaipur@everesttools.com

TAMIL NADU, KERALA :94, Broadway, Chennai - 600 108,
Tel.: 044-25228994, 42053948 Godown : 044-42160821
Mobile:09840456244/09380943940 / 09840695679
E-mail : chennai@everesttools.com

UTTAR PRADESH, UTTARAKHAND: 27, Sarain
Durvijaiganj, Ganeshganj, Lucknow - 226 004
Tel. : 0522-3912413,2683392 & 93, Fax : 0522-3914080
Mobile : 09838833337 / 09415001276
E-mail : lucknow@everesttools.com

WEST BENGAL , ORISSA :
12/B, Madan Chatterjee Lane, Kolkata - 700 007
Tel: 033-22693449 Mobile:09748718054,09748002387
E-mail : kolkata@everesttools.com

TERMS AND CONDITIONS

1. This Price list / Catalogue is effective from 1st November 2013.
2. Prices are on F.O.R destination basis.
3. Prices are maximum retail price inclusive of all taxes.
4. The Company reserves its right to revise the prices and specification of the products without prior notice.
5. This Supercedes all our previous price lists.
6. All despatches w.e.f. 1st November 2013 shall be in accordance with Price List No. 011113/13-14.
7. The dealers are free to charge prices lower than the price set up in the Price List.

Payments - Dealers may deposit payments with UCO Bank in their locality directly into our account **CC 18610500000237** or **RTGS / NEFT - UCBA 0001861** and send the pay-in slips to the respective depots from where the material was purchased.



HINDUSTAN EVEREST TOOLS LIMITED

Registered & Head Office :

Dohil Chambers, 46, Nehru Place, New Delhi - 110 019 Phones: 91-11-46692600 Fax : 91-11-41606788
e-mail:domestic@everesttools.com , website:www.everesttools.com

Factory: Village : Jatheri, P.O. : Rai, Distt. : Sonapat (Haryana) Tel.: (0130) 2366275, 2366343

Fax No. : 0130-2366235

Authorised Stockist